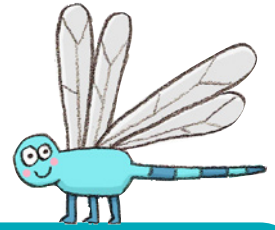


Bath Locks Trail

Kennet & Avon Canal

It's 1850. Your job is delivering Bath stone to Deep Lock. You are the first person in your family to go to Bath. Your mum has heard gossip about Bath. But is it TRUE?

Bath stone is famous for its lovely golden colour.



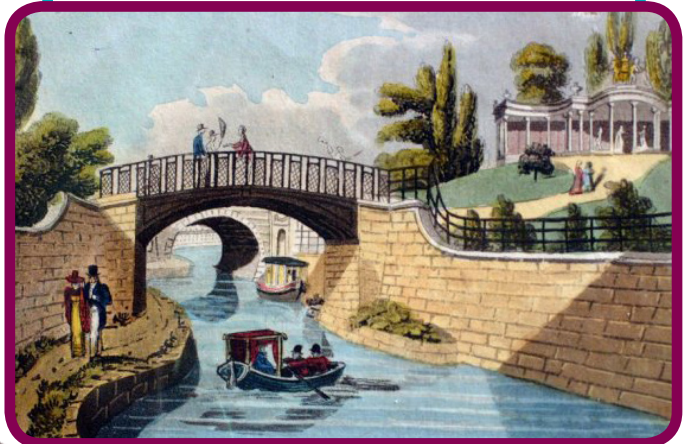
Join the towpath from Sydney Gardens



Bath is for posh people. Scruffy boaters like us aren't welcome.

Listen

... out for trains. In 1841, the owners of Sydney Gardens allowed the railway to be built through the gardens. There was even a viewing place so people could watch the train whizz through!



Sydney Gardens were very smart. People paid to get in. The owners didn't want a working canal spoiling their lovely gardens. So the canal company had to pay lots of money, provide designer bridges and hide the canal in a deep cutting!

Activity

Look for two delicate white iron bridges.
Draw the one you like best here to show your mum.

Map of Bath Locks Trail on the Kennet & Avon Canal



The Bath Flight of Locks Links the River Avon to the Kennet & Avon Canal. It was completed in 1810.



Gate to Sydney Gardens

Darlington Wharf

Cleveland House

Crossover Bridge

Activity

You are at Sydney Gardens. How many locks will you go through between Sydney Gardens and Deep Lock? I will go through ... locks. How long will it take you? 10 minutes? 1 hour? All day? I think it will take ...

Top Lock Cottage

Baird's Maltsters

Top Lock 13

Lock 12

Pumping Station Chimney

Lock 11

Wash House Lock 10

Deep Lock 8/9

Widcombe Bottom Lock 7

Always remember to stay SAFE near water – Stay Away From Edge

Go through the tunnel to **Cleveland House**.

LoOk

... for Cleveland House. It is built of Bath stone.



I heard Cleveland House was built by a posh duke!



LoOk

Can you find a square hole in the tunnel roof. Nobody knows what it's used for! Perhaps it's a secret way into Cleveland House above? Or an escape route? Or just a boring old rubbish shute?

Date:

POST CARD

Published by Davis's, 2, Cornmarket, & 13, The Turl, Oxford.

This Space may be used for Communication.

The Address only to be written here



Dear Mum
I've seen a square hole
in the roof of a tunnel
I think it's a ...
because ...

Love ...

LoOk

Can you find these?



Stonemasons' marks on the wall of the tunnel.



Grooves made by towropes at the entrance to the tunnel.



Statue of Sabrina, a water goddess.

Carry along the towpath to Crossover Bridge

This bridge is designed so you don't have to unhitch your horse when the towpath changes sides.



Activity

Can you untangle the lines and get your horse across the canal?

Oh no!
My towrope has
got muddled up with
another rope! I won't
tell mum!



Activity

Carry along to towpath to the Baird's Maltsers

The canal was lined with working buildings and wharves where goods were unloaded. There were stables where horses were fed and watered.

Look for this building.

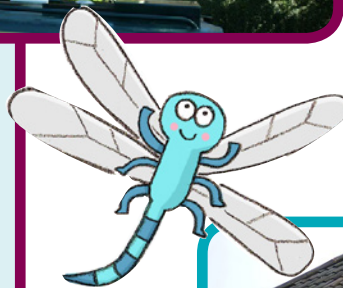


Can you make out the name of the owner the building?

It is....

The second word is 'Maltsers'. What do you think the building was used for?
Making barley into malt for beer?
Making chocolate 'Maltesers'?

The Lock Keeper at Bath Top Lock lived in this cottage. The Bath Humane Society kept equipment here to rescue people who fell in the canal!



Look

Can you spot this building?



Walk along the towpath to **Bath Top Lock**



... for the big houses on the opposite bank. They are built of Bath stone. Note the wall hiding the canal from view! Notice all the chimneys too. Coal to fuel the fires was delivered by canal boats.



The canal attracts lots of wildlife, especially water birds and damselflies.

Activity

Do you think your mum would prefer to live in a posh house with coal fires, a big garden and lovely views? Or a cosy canal boat?

I think she would like to live in...

because ...

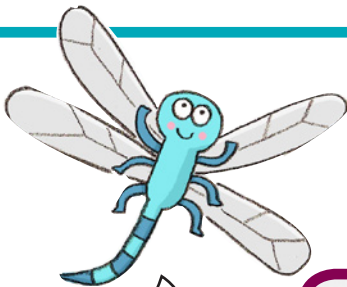
Activity

Carry on down the towpath to the **Pumping Station Chimney**

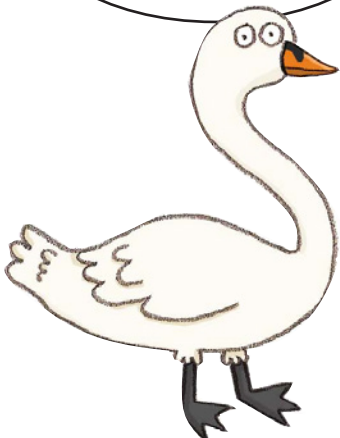


Boats passing through locks use lots of water. This pumping station was built to pump up water from the River Avon. People in the smart houses didn't want an ugly chimney. So this one was designed to look good.

Draw it here to show your mum.



Swans mate for life and guard their own patch from other swans.





Stop by the sundial

Activity

The canal boats carried loads of different goods. Look on the side of the sundial facing the wall.

Can you spot something:

to heat houses?

to build with?

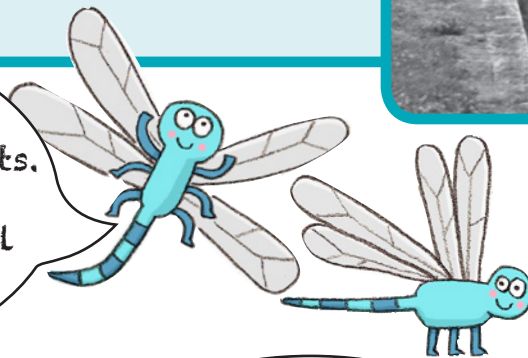
to make into food?

Walk down to Wash House Bridge

Women living in the canal side cottages did the washing for tourists who came to Bath. That's how Wash House Bridge gets its name!



This wrought iron bridge was manufactured by Stotherts. The company made a fortune by supplying all the ironwork for the canal.



Before the bridge was built, boaters crossed the canal by walking along the slippery top of the lock gates. Scary!

Bath Deep Lock

You've arrived! Look into the lock. But be careful –it's the second deepest lock on the canal system!

How deep do you think it is?

About 3 metres

About 6 metres

About 9 metres

I'll tell my mum that there are lots of beautiful buildings and bridges along the canal in Bath so it didn't spoil the lovely surroundings for posh people.



If you've enjoyed this trail why not do the Devizes and Caen Hill Locks Trail too? If you log on to canalriverexplorers.org.uk you'll find lots of other fun things to do!